

# Environmental impact assessment for climate change policy with the simulation-based integrated assessment model E3ME-FTT-GENIE

Jean-Francois Mercure<sup>a, b, c, \*</sup>, Hector Pollitt<sup>b, c</sup>, Neil R. Edwards<sup>c, d</sup>, Philip B. Holden<sup>d</sup>,  
Unnada Chewpreecha<sup>b</sup>, Pablo Salas<sup>c</sup>, Aileen Lam<sup>c, e</sup>, Florian Knobloch<sup>a, c</sup>,  
Jorge E. Vinuales<sup>c</sup>

<sup>a</sup> Radboud University, Netherlands, Department of Environmental Science, PO Box 9010, 6500 GL, Nijmegen, The Netherlands

<sup>b</sup> Cambridge Econometrics Ltd., Covent Garden, Cambridge CB1 2HT, UK

<sup>c</sup> Cambridge Centre for Environment, Energy and Natural Resource Governance (C-EENRG), University of Cambridge, The David Attenborough Building, Pembroke Street, Cambridge, CB2 3QZ, UK

<sup>d</sup> Environment, Earth and Ecosystems, The Open University, Milton Keynes, UK

<sup>e</sup> Department of Economics, Faculty of Social Sciences, Humanities and Social Science Building, University of Macao, E21, Avenida da Universidade, Taipa, Macao

## ARTICLE INFO

### Article history:

Received 16 July 2017

Received in revised form

23 January 2018

Accepted 5 March 2018

Available online 16 March 2018

### Keywords:

Integrated assessment modelling

Climate policy

Climate change

Environmental impacts assessment

## ABSTRACT

A high degree of consensus exists in the climate sciences over the role that human interference with the atmosphere is playing in changing the climate. Following the Paris Agreement, a similar consensus exists in the policy community over the urgency of policy solutions to the climate problem. The context for climate policy is thus moving from agenda setting, which has now been mostly established, to impact assessment, in which we identify policy pathways to implement the Paris Agreement. Most integrated assessment models currently used to address the economic and technical feasibility of avoiding climate change are based on engineering perspectives with a normative systems optimisation philosophy, suitable for agenda setting, but unsuitable to assess the socio-economic impacts of realistic baskets of climate policies. Here, we introduce a fully descriptive, simulation-based integrated assessment model designed specifically to assess policies, formed by the combination of (1) a highly disaggregated macro-econometric simulation of the global economy based on time series regressions (E3ME), (2) a family of bottom-up evolutionary simulations of technology diffusion based on cross-sectional discrete choice models (FTT), and (3) a carbon cycle and atmosphere circulation model of intermediate complexity (GENIE). We use this combined model to create a detailed global and sectoral policy map and scenario that sets the economy on a pathway that achieves the goals of the Paris Agreement with >66% probability of not exceeding 2 °C of global warming. We propose a blueprint for a new role for integrated assessment models in this upcoming policy assessment context.

© 2018 The Author(s). Published by Elsevier Ltd. This is an open access article under the CC BY license (<http://creativecommons.org/licenses/by/4.0/>).

## 1. Introduction

### 1.1. New questions raised by the Paris Agreement and the role of models

December 2015 saw a historical moment for climate policy in which, for the first time, almost all countries of the world adopted a formal agreement to reduce emissions in order to limit global

warming to temperatures below 2 °C [1].<sup>1</sup> This event marked a change in efforts to develop climate policy: the agenda, whether or not to adopt measures to avoid climate change, was mostly set. What remained to be done was to find out how to achieve this objective with public policies, in every country that is party to the agreement.

<sup>1</sup> Article 2a of the Paris Agreement sets the following target: “Holding the increase in the global average temperature to well below 2 °C above pre-industrial levels and pursuing efforts to limit the temperature increase to 1.5 °C above pre-industrial levels, recognizing that this would significantly reduce the risks and impacts of climate change”.

\* Corresponding author. Radboud University, Netherlands, Department of Environmental Science, PO Box 9010, 6500 GL, Nijmegen, The Netherlands.

E-mail address: [J.Mercure@science.ru.nl](mailto:J.Mercure@science.ru.nl) (J.-F. Mercure).

Developing climate policy is a complex process that could involve planning for dramatic societal changes and socio-economic impacts [2]. Policies can have unintended effects. The far-reaching consequences of adopting particular emission reduction policies can be challenging to fully foresee, as they involve changes in many sectors and for many actors. For example, could adopting a high price of carbon to incentivise electrification increase electricity prices for consumers, thereby reducing access to modern energy for those who cannot afford it? Can biofuels policy lead to unintended land-use change, or lead to water or food scarcity? Could reducing the consumption of fossil fuels globally lead to high rates of unemployment in producer countries? Could a highly capital-intensive, low-carbon transition lead to excessive debt leveraging of government and/or firms, and result in a carbon bubble?

In order to determine the impacts of specific policies, research must move from the agenda-setting stage to the actual impact assessment of policies. This corresponds to a different stage of the policy cycle, and requires analysing the impacts of detailed baskets of policies, as they are envisaged by policy-makers, with all the attendant political and legal complexities, rather than merely recommending – often unrealistic – policies that appear optimal. In the perspective of impact assessment (e.g. see [3]) the policy parameter space is too large to optimise, and individual policies can synergise or interfere [4]. The complexity of the impact assessment problem must account for the uncertainty over the knowledge of the modeller about the way in which decision-making actually takes place with agents [5], and how the heterogeneity of agents might influence policy outcomes [6,7]. Models based on representative agents have therefore insufficient resolution for carrying out realistic impact assessment [8]. It is more and more recognised that increasing the level of behavioural information in models enables them to represent more policy instruments and thus cover a wider policy space [9–12].

Climate policy analysis, in the agenda setting perspective (e.g. [13–15]), has focused primarily on total energy system cost, consumption loss and GDP loss as indicators to characterise the socio-economic impacts. This is now insufficient, as policy-makers are increasingly requiring information on many other types of impact [16]. For example, questions arise over large-scale finance of technological change, and its impact on the macroeconomic system [17]. The choice of model type for this purpose pre-determines the results that can be reached [18]. Most equilibrium models of the economy used to analyse climate policy have restrictive assumptions over the functioning of the financial sector such that their outcomes are almost entirely determined by a debatable assumption, that re-allocating finance for technological change to reduce emissions takes away investment from other productive sectors of the economy, which automatically leads to loss of GDP ([19], see also [13] and references therein). In fact, research on innovation tends to suggest the opposite [20–22]. Following the financial crisis of 2008, the key question of many policy-makers is not how many percentage points of GDP loss climate policy might entail, but rather, whether securing large-scale investment is possible without leading countries to financial instability [23–27].

In this paper, we introduce the new integrated assessment model E3ME-FTT-GENIE, which is designed to tackle the question of environmental impact assessment with the most realistic policy definition currently available, while enabling policy-makers to explore macro-financial issues that may arise from the introduction of such policy. We first describe the policy context that the model attempts to address, as well as the origin and history of economic thought behind its assumptions. We then describe its components: climatology, non-equilibrium macroeconomics and evolutionary technology modelling. We subsequently provide an example of

environmental policy analysis under several socio-economic indicators. We conclude with an outlook for future research in the field of integrated assessment modelling.

## 2. Context: fundamental uncertainty in impact assessment

### 2.1. Pervasive property: fundamental uncertainty means no equilibrium

The modelling approach described in this paper is one of simulation. Each part of the E3ME-FTT-GENIE modelling framework attempts to represent real world relationships, in terms of accounting balances, physical interactions and human behaviour. This consistency in approach throughout the suite of linked models is crucial to providing insights that are useful to policy-makers. The results from the model are predictions of outcomes based on empirical behavioural and physical relationships observed in the past and the present.

The starting point of this methodology regarding human behaviour is one of fundamental uncertainty [28,29]. This premise expresses limitations to knowledge and to the knowable for agents that take part in the economic process. This position runs contrary to the assumptions of perfect knowledge and/or perfect foresight that underlie many other modelling tools, which are used in order to simplify theories and models to a tractable state. Fundamental uncertainty recognises that it is not possible for individuals, firms or other agents to know all the possible outcomes from a decision-making process, and thus that 'unknown unknowns' exist. Under these conditions, it is not possible to estimate probabilities of different outcomes of particular agent decisions, as, with unknown outcomes, the probabilities would never sum to one. From this standpoint, some aspects of decision-making by agents lacking knowledge cannot be reduced to pure risk (as it is in standard Expected Utility Theory). Hence, it is therefore not possible to optimise the decision-making process, and agents either make decision errors, or plan ahead for uncertain outcomes (e.g. with spare production capacity).

As noted by Keen [30], it only requires one agent to make sub-optimal decisions for the system of optimisation to break down as a whole. The consequences are profound. For example, without full knowledge by every economic agent of supply- and demand-price elasticities, there is no guarantee that prices will move to market-clearing rates, where resources would be used in the most efficient manner. The level of output is no longer determined by supply-side constraints (e.g. the number of factories), as the available resources will not necessarily be used (there may be too many factories for the demand). Alternatively, given fundamental uncertainty in the knowledge of the demand function by agents, agents may decide to build spare capacity in preparation for possible demand fluctuations.

### 2.2. There is no optimality in policy-making

Without optimizing behaviour, it is not possible to design optimal policy. Probst and Bassi [2] recognize the shortcomings of attempting to optimise public policy. The authors advocate an approach that is based on identifying policy that is found to be effective in the real world, rather than aiming for optimal outcomes. Learning-by-doing in policy-making reduces fundamental uncertainty. To be effective, the policies must first address the issue they are designed for, but ideally, also avoid negative consequences in other policy areas (for example, large economic costs or negative impacts on social cohesion). Due to the complex nature of contemporary economies and the heterogeneous nature of agents that interact within these economies [8], it is not sufficient to

monetise these impacts and sum them together using a cost-benefit analysis approach; each must be considered in its own right. Importantly, policies must also be considered in the context of political and legal feasibility (*ibid*). Policy-making does not take place in a political and legal vacuum. The enactment of some policies (e.g. a top-down global carbon price or a standardized income tax rate across countries) may be highly unrealistic and even counterproductive. In some cases, such policies may fall foul of fundamental tenets of social organization enshrined in constitutions or treaties (e.g. human rights provisions) or, due to the limited political space left for their adoption, they may have to be legally structured in a manner that makes them less resilient (e.g. local content requirements in green industrial policy or the use of regulations under scattered statutes [31]).

These findings suggest, for example, that policies based on estimates of the social cost of carbon could be misguided. The assessment approach adopted by the European Commission [3], which follows a method of multi-criteria analysis with extensive stakeholder interaction more viable. Under this approach, a limited set of feasible policy options are identified and these are tested across a range of key assessment indicators. This method is applied to all policy proposals, not just those relating to sustainability. This is likely a valid blueprint for successful evidence-based policy-making elsewhere in the world.

### 2.3. Path-dependence and the need for simulation models

Perhaps the key aspect that must be properly accounted for in sustainability transition scenarios, and in macroeconomics in general, is technological and productivity change. Economists here fall into two schools of thought: some consider that technology cannot be influenced by policy and therefore that the economy must adapt to existing 'exogenous' technological change (e.g. robotisation), whereas others think that technology is 'endogenous' and can be influenced by targeted policy. There is extensive empirical evidence that supports the latter position by showing how public policy plays a key role in promoting and guiding technological change [20,32]. The work of Grubb et al. provides a review of the process of technological development and diffusion in the context of decarbonisation and low-carbon transition [32]. They find that the rate and direction of technological change can undoubtedly be influenced by policy, and that different types of policy instruments are suitable for different stages of technology development and diffusion. Therefore, a modelling tool that aims to match reality as closely as possible must account for this finding. On the other hand, it is far from demonstrated empirically that the economy can indeed 'internalise' externalities using only pricing incentives, as suggested by standard welfare economics.

Yet, this finding is not new. The work of Arthur showed, using simple models, that relatively minor changes to policy could lead to qualitatively different outcomes for technology diffusion in the long run due to 'social influence', 'path dependency' and technology 'lock-in' [33,34]. These processes describe how a single technology can come to dominate a particular sector, with highly non-linear outcomes. This is also a key finding in the study of the diffusion of innovations [35]. Policy-makers can steer users towards a particular technology but the rates of technology adoption are, again, highly complex, with considerable uncertainty about the outcomes. Modelling path-dependent systems requires simulation models, since the behaviour of such systems, by definition, depends on relationships between present and past conditions. Optimisation methodologies are not suitable to model path-dependence, since they do not make a clear connection between points in time.

## 3. The E3ME-FTT-GENIE integrated assessment model

### 3.1. Overview of the integrated assessment simulation model

The E3ME-FTT-GENIE<sup>2</sup> model is a simulation-based integrated assessment model that is fully descriptive, in which dynamical (time-dependent) human or natural behaviour is driven by empirically-determined dynamical relationships. At its core is the macroeconomic model E3ME, which represents aggregate human behaviour through a chosen set of econometric relationships that are regressed on the past 45 years of data and are projected 35 years into the future. The macroeconomics in the model determine total demand for manufactured products, services and energy carriers. Meanwhile, technology diffusion in the FTT family of technology modules determines changes in the environmental intensity of economic processes, including changes in amounts of energy required for transport, electricity generation and household heating. Since the development and diffusion of new technologies cannot be well modelled using time-series econometrics, cross-sectional datasets are used to parameterise choice models in FTT. Finally, greenhouse gas emissions are produced by the combustion of fuels and by other industrial processes, which interfere with the climate system. Natural non-renewable energy resources are modelled in detail with a dynamical depletion algorithm. And finally, to determine the climate impacts of chosen policies, E3ME-FTT global emissions are fed to the GENIE carbon cycle-climate system model of intermediate complexity. This enables, for instance, policy-makers to determine probabilistically whether or not climate targets are met.

Fig. 1 shows the structure of the model. E3ME exchanges information dynamically with several FTT technology diffusion modules, themselves hard-linked to E3ME. E3ME generates the demand for carbon-intensive products and services to the FTT modules, which feed back prices, investment and the demand for other inputs such as energy carriers. The natural resources modules limit the deployment of renewables, and track the depletion of fossil and nuclear fuels. The models are solved together iteratively.

The model is path-dependent, such that different policy scenarios generate different techno-economic and environmental trajectories that diverge from each other over time. There is no unique parameter (or objective function) under which the model can be optimised in terms of a particular outcome variable, since the space of socio-economic indicators is relatively large, and value judgment is left to the interpretation of the user. Since the size of the policy space is enormous, and the computational task would be relatively intensive, there is likely little value in return for the substantial effort that would be required to optimise policy scenarios. Furthermore, several different types of baskets of policies can reach the same environmental outcomes.

The model is instead used under the 'what if' mode of impact assessment: policies are chosen, and outcomes are observed in terms of the choice of policies. The policies designed in the model are policy instruments that exist in the real world, for example emissions trading schemes, energy taxes, vehicle taxes, feed-in tariffs, subsidies, direct regulation or biofuel mandates. Other assumptions concern government expenditure on education, defence and other services, demography and the price of some global commodities. In the Supplementary Information (SI), we provide a complete cross-referenced list of model equations for E3ME-FTT.

<sup>2</sup> E3ME: Energy-Economy-Environment Macro-Econometric model, global macroeconomic model. FTT: Future Technology Transformations family of technology models. GENIE: Grid Enabled Integrated Earth system model, an integrated carbon-cycle and climate simulation model.

### 3.2. The macroeconomic model E3ME

E3ME is a computer-based model of the world's economic and energy systems, linked to emissions. It was originally developed through the European Commission's research framework programmes and is now widely used globally for policy assessment, for forecasting and for research purposes. Examples of recent applications include [36–42]. The full manual for the model [43] is available at the model website <http://www.e3me.com/>. In this section we provide a short summary description. A list of the model's equations is provided in the SI.

E3ME splits the world into 59 global regions, with 43 sectors in each region. The regions are linked through bilateral trade equations, while input-output tables provide the linkages between the different sectors. As a macro-econometric model, E3ME's data requirements are extensive, with time-series data required for each indicator in each sector in each country. The current model database covers 1970–2015 and the main data sources are Eurostat, OECD, World Bank, IMF, IEA and national statistical agencies. The econometric techniques used to specify the functional form of the equations are the concepts of co-integration and error-correction methodology, particularly as promoted by Engle and Granger [44], and Hendry et al. [45] (SI section 1.4). Thus, the model is regressed over the period 1970 to 2015 (45 years), and runs freely between 2016 and 2050 (35 years).

E3ME is often compared to Computable General Equilibrium (CGE) models and is often applied to answer the same sorts of questions, using the same scenario-based approach. The accounting identities described below are in general consistent with the ones that can be found in a CGE model. The inputs to E3ME are also similar to inputs to CGE models and the different modelling approaches share many of the same output indicators.

However, there are key differences between E3ME and a typical CGE model. E3ME is derived from post-Keynesian economic theory [46], as opposed to neoclassical economics for CGE models (See [17,18]). As stated in section 2.1, the starting point for agents in the model is one of fundamental uncertainty, and behaviour is inferred from past relationships. Although the model is thus subject to the Lucas critique [47], it avoids assumptions about optimisation and perfect information that have been questioned as representations of the real world [30,48].

Fundamental uncertainty implies that while the identity of supply and demand matching is observed, there is no constraint that demand equals *potential* supply. It is thus possible for there to be unused resources, for example unemployed workers, unused equipment or financial capital, which can be brought in for production if the demand requires it. E3ME incorporates a treatment of endogenous money [46]; the treatment of finance in CGE and other theoretical modelling approaches has been recognised as a major limitation in approach [18], which sits at odds with the observed reality [49,50].

In such a demand-led economy, it is the level of effective demand that determines output, as originally described by Keynes [28,51]. The model solves iteratively in the same way as an economic multiplier could be estimated by repeatedly carrying out matrix multiplication of the input-output table (instead of calculating the inverse). But whereas multiplier analysis only calculates changes in intermediate demand, the econometric equations in E3ME make final demand endogenous as well. Crucially, prices are also determined through econometric equations, rather than automatic adjustments that achieve market clearing.

Since E3ME allows for the possibility of the existence of spare resources, it can sometimes yield positive economic and social benefits of technological change policies such as for climate change mitigation, in contrast to CGE models. It is possible (although by no means guaranteed) to predict double dividends<sup>3</sup> in model results, where environmental regulation can lead to faster rates of economic growth [52–54], something that is ruled-out in the premise of CGE models.

E3ME is based on a social accounting matrix that involves highly disaggregated input-output tables. This defines the macroeconomic identity, in which total demand is derived from intermediate demand,

$$L + V = Y = C + I + G + (X - M), \quad (1)$$

Where  $L$  represents labour wages,  $V$  represents remaining value added (profits and taxes on production),  $Y$  is total production (GDP),  $C$  is consumption,  $I$  is investment,  $G$  is government expenditure,  $X$  is exports and  $M$  is imports. Here,  $C$ ,  $I$  and  $M$  are derived from econometric regressions, while  $Y$  is derived from the identity that supply equals total demand ( $G$  is exogenous).  $C$  is a function of income and prices, while  $I$  is a function of the ratio of actual output to potential output, prices and technological progress, and  $M$  is a function of international competitiveness and technological progress; total imports are split into bilateral flows which, when inverted, can be summed to yield exports. Technological progress is measured by cumulating past investment and R&D, and gives rise to price declines as technology improves; and thus a virtuous cycle arises between prices, consumption, exports, investment and output, the origin of endogenous growth in E3ME.

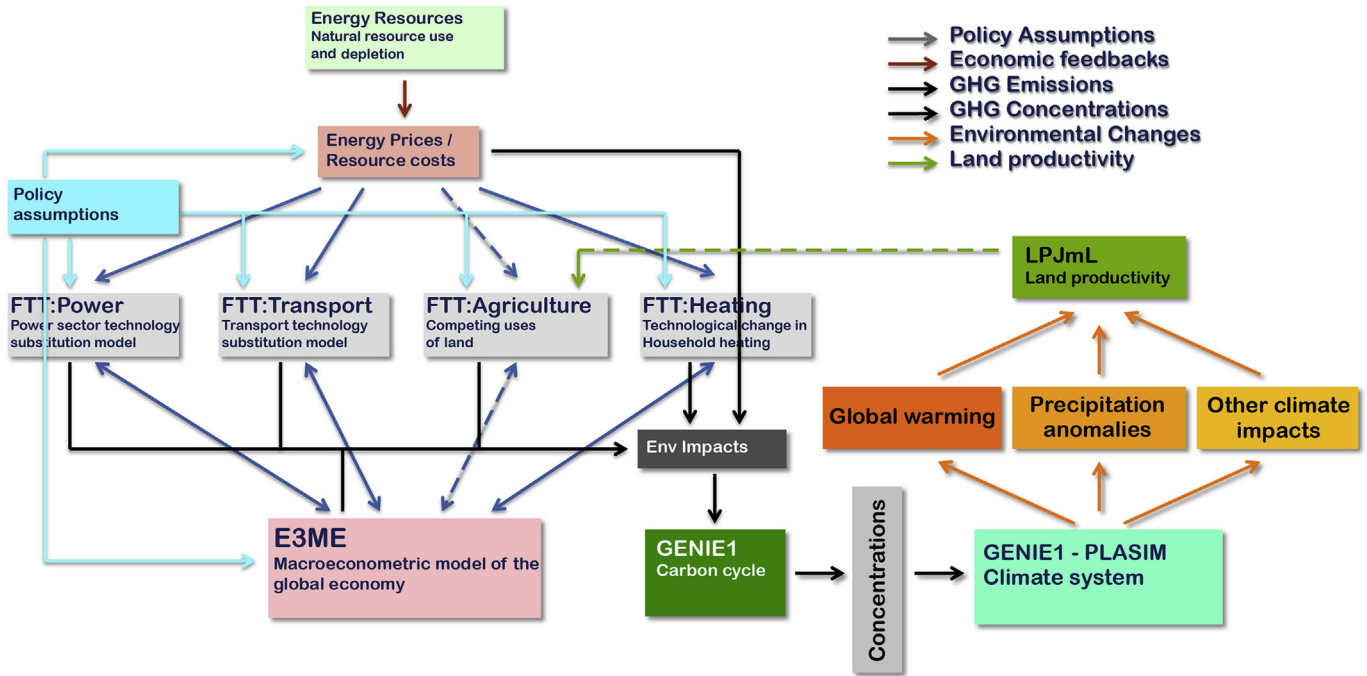
This contrasts with a CGE model in which  $Y$  is determined by a production function,  $C$  is derived through the macroeconomic identity (1),  $I$  is equated to savings, a fixed proportion of  $Y$  and technology is often exogenous. In E3ME,  $I$  is not function of  $Y$ , but is indirectly related through the fact that when economic growth rates increase, more investment opportunities arise. This is described in detail in the SI.

### 3.3. Technological change model family FTT

The diffusion of individual types of technology (e.g. electric vehicles, wind turbines) is not correctly modelled using linear regression models applied to time series such as those used for each econometric specification in E3ME (e.g. for energy demand). This is because the diffusion of innovations typically follows network effects, where adoptions of or investment in new technologies by agents are strongly influenced by whether other agents have done the same previously (see Ref. [55]). This can be due to the fact that agents adopt technologies used in their surroundings with a higher likelihood than technologies of which they have no experience, and/or to the fact that firms with higher sales volumes are more able to capture market shares, while innovations with comparatively small sales volumes are produced by firms with lower capacity (expanding capacity takes time and requires expectations of future sales). Both of these processes lead to archetypical S-shaped diffusion curves (see [35,56]).

In order to represent diffusion, regression models would need to regress a variable onto itself, leading to a recursive endogenous problem that does not have a unique parametric solution [55]. This is a reflection of the fact that diffusion is a path-dependent process: it strongly depends on its past history (e.g. see Ref. [33]). This also means that diffusion builds momentum as it progresses, since the faster the diffusion of an innovation is, the faster it can become. In a model, this mathematical property (autocorrelation in time) prevents in fact the model configuration to instantaneously flip

<sup>3</sup> Double dividends here mean two simultaneous positive impacts of environmental policy, which on the one hand incentivises agents to address environmental harm, and on the other hand re-allocates funds in a way that improves overall income.



**Fig. 1.** Diagram of the E3ME-FTT-GENIE integrated assessment simulation model. Note that the land-use model is under development and not discussed here. Dashed lines refer to sections under development.

between different but simultaneously attractive adoption pathways, making models more intuitive and realistic: once a pathway is followed, it becomes increasingly locked-in. Due to this property, results also become less critically reliant on very detailed cost data, in comparison to the more common social planner/representative agent paradigms of cost-optimisation (i.e. agents do not simply just adopt the very least cost options; they tend to adopt what is already dominant in the market. See [4,55,57], for discussions; a clear reason is given in Ref. [48]).

In FTT, we consider agents who own or use a technology that produces a certain service (e.g. generating electricity, transport, household heating), and who consider replacing that technology for a new unit. Such an event takes place at a rate determined by the survival in time of technology units and/or the financing schedule, when switching from  $i$  to  $j$ , denoted  $A_{ij}$ . We assume that these agents make comparisons between options that they see available in the market, which we structure by pair-wise comparisons (other comparison schemes are equivalent, see Ref. [55]). The proportion of agents already using technology  $i$  is  $S_i$ , that technology's market share. The proportion of agents considering the advantages of technology  $j$  is  $S_j$ , the market share of technology  $j$ . We denote the relative preference of agents for technology  $j$  over technology  $i$  with the matrix  $F_{ij}$ , a fraction between 0 and 1. If we picture shares of technologies being transferred between technology categories as agents gradually replace the stock, then we obtain the equation:

$$\Delta S_i = \sum_{j=1}^N S_i S_j [A_{ij} F_{ij} - A_{ji} F_{ji}] \Delta t, \tag{2}$$

This equation is famously named the Lotka-Volterra competition equation, a system of non-linear differential equations more often used in ecology to express the competition for resources between species in an ecosystem (e.g. plants competing for space). It is also extensively used in evolutionary game theory [58]. This equation is used in FTT models under slightly varying types of

parameterisation. We describe this mathematical system in detail in [55,59,60].

In FTT, we assume that agents optimise their own costs and benefits, but due to multi-agent influence (diffusion networks), this does not generally lead to a cost optimum at the system level, and indeed, we do not optimise total system cost. The preference matrix  $F_{ij}$  is probabilistic, determined by the use of a binary logit (Fig. 2, see also [61,62]). Discrete choice theory is used to represent the diversity of agent preferences in a group, a diversity that determines elasticities of substitution.<sup>4</sup> Here, substitution is not instantaneous, as opposed to standard multinomial logit models, due to our use of the Lotka-Volterra dynamical system. Thus we use here a binary logit to determine preferences, not substitutions. Substitutions follow preferences, but also availability. It has, however, the key property of representing heterogeneity of preferences, which translates in the model as a probabilistic nature for  $F_{ij}$  (e.g.  $F_{ij} = 30\%$  and  $F_{ji} = 70\%$  means that 30% of agents, who have knowledge of both technologies  $i$  and  $j$ , prefer technology  $i$ , while 70% of these prefer technology  $j$ ).

The binary logit is calculated as follows. We define a generalised cost axis  $C$  that encompasses all relevant quantifiable components of preferences. The diversity of agents is represented as distributions of perceptions of agents over this cost axis (Fig. 2). The comparison exercise becomes one of comparing probability distributions. We assume these distributions to be normal in a space simply functionally related to  $C$  (linearly in the power sector and heating models, see Mercure 2012 [59], lognormal distributions for transport, see [7,57]). The result of the comparison of distributions is the binary logit [60]:

<sup>4</sup> Diversity/heterogeneity here means all the sources of variations in decisions between different agents, leading to distributed quantities in the model.

$$F_{ij} = \frac{1}{1 + \exp\left(\frac{C_j - C_i}{\sigma_{ji}}\right)}, \quad \sigma_{ji} = \sqrt{\sigma_i^2 + \sigma_j^2}, \quad F_{ij} + F_{ji} = 1 \quad (3)$$

This generates the property that cost differences have to be larger than the diversity of the group's perceptions (i.e.  $C_j - C_i \gg \sigma_{ji}$ ) in order for attractiveness towards one option to be significant, and therefore for diffusion to take place. This makes the model less reliant on the accuracy of cost data when diversity is high, which is generally the case ( $\sigma_i$  is typically of the order of one third of  $C_i$ ).

Finally, FTT is calibrated on historical diffusion data in order to make its outputs consistent with history. This is done by adding a factor in the cost being minimised by agents, which makes diffusion trajectories at the start of the simulation the same as technological trajectories observed in historical data near to the start date of the simulation (equating the simulated/historical rates of adoption).

More details on the FTT model can be found in [55,59,60] (theory) and [4,57] (computational models). We note that the diffusion of innovations in FTT assumes the deployment of any infrastructure necessary for the deployment of technologies, which we consider part of the diffusion process (see for instance [63]).

### 3.4. A dynamical fossil fuel resource depletion model

The fossil fuel depletion model used in this work is derived from a model by Mercure & Salas [64], based on a fossil fuel resource dataset given in Mercure & Salas [65]. The model represents global markets for homogenous fossil fuel commodities, which are produced at various locations around the world, with different methods, which incur different costs of production. The main assumption of the model is that the marginal cost (i.e. the cost of the most expensive unit of fuel produced) sets the price of the commodity. This is supported by the assumption that producers refuse to produce at a loss (this is not always strictly true; however, producing at a loss cannot last indefinitely); if the price does not cover producer costs, we assume that producers refuse to supply fuel. Thus, sellers at the marginal cost enjoy low or zero profit over their production, while producers in lower cost ranges enjoy a larger profit. The model does not cover storage for security and price speculation purposes, or supply processing bottlenecks, and therefore does not reproduce some types of cyclic behaviour. The model generates a base price under which lower cost types of production are profitable, and higher cost types of production are unprofitable, the balance of which supplies global demand. Results from this model are used to proportionally scale fuel price changes in E3ME as demand evolves; E3ME prices include taxes and possible margins of profit, not included in the depletion algorithm discussed here.

The depletion algorithm works as follows (Fig. 3). The fossil fuel resource database features quantities of fossil fuels at different production costs at the time of the start of the simulation, which were interpolated into a cost distribution of resources. Resources are extracted at a rate determined empirically [64], representing a combination of technical constraints (e.g. oil well technical depletion rates) and human decisions (e.g. strategic choices). We assume the same rate of depletion in all cost ranges based on available information.

We assume that the rate of extraction of resource  $i$  in each possible extraction cost ranges  $C_i$  to  $C_i + dC_i$  is proportional to the quantities left in those cost ranges, with the same proportionality factor  $\nu_i$ . Thus, if  $n_i(C, t)$  is the cost distribution of resources left at time  $t$ , and  $\nu_i$  is the rate of extraction (production to reserve ratios), then the depletion algorithm is:

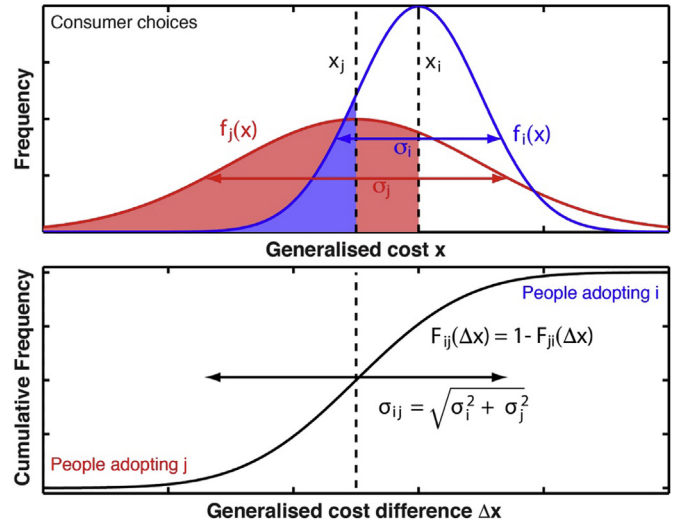


Fig. 2. Schematic representation of pair-wise comparison of technological options by heterogeneous agents with varying preferences. (Top panel) Preferences vary following distributions in an appropriately chosen space of generalised cost. (Bottom panel) The resulting choice matrix follows a series of binary logits forming the choice matrix  $F_{ij}$ , of which the variations in generalised cost space follows the degree of heterogeneity of agent preferences. Reproduced from Ref. [60].

$$\Delta n_i(C, t) dC_i = \nu_i n_i(C, t) f(P_i - C_i) \Delta t dC_i, \quad (4)$$

where  $f(P_i - C_i)$  is a cumulative probability distribution function for the likelihood of deciding to extract resources in cost range  $C$  given a commodity price  $P$  (a smooth step function equal to zero when the price is much lower than the cost of extraction; equal to one if the extraction is profitable). We denote total supply as  $F(t)$ , and sum up supply from all types of extraction sites currently operating:

$$F_i(t) = \int_0^{\infty} \Delta n_i(C, t) dC_i = \int_0^{\infty} \nu_i n_i(C, t) f(P_i - C_i) \Delta t dC_i. \quad (5)$$

E3ME-FTT provides a total demand for fossil fuels, which depends on their price, due to a combination of elasticities across the model, as well as efficiency changes due to R&D investment, and due to technological change in FTT models (e.g. the diffusion of renewables and electric vehicles). Thus an iterative process is used in order to determine the supply of fuel and price that agrees with both this model and the whole of E3ME-FTT. At each iteration, the price  $P_i$  is searched, by a simple trial and error algorithm, such that  $F_i$  equates the E3ME-FTT demand, at which point the price is fed to E3ME-FTT, which supplies a new demand value, and the process starts again, until changes in both  $F_i$  and  $P_i$  are maintained below certain criteria.

### 3.5. Limits to renewables

E3ME-FTT features a database for resource potentials for renewables [65]. This involves, for example, the amount of land suitable for installing wind turbines, the number of potential sites available for hydroelectric installations, or geothermal active areas. These were converted in the form of cost-supply curves. The use of this database is simpler than in the case of non-renewable resources, since all that is necessary is to determine a marginal cost for the resource, which is a function of its level of use. If the level of use increases, the cost increases, while if it goes down (e.g.

decommissioning a wind farm), the cost goes down as the sites become available again.

In reality, the process is more complicated than that. The depletion of wind or solar resources takes the form of wind/solar power developers building wind farms or solar parks in areas of low capacity factors, while for hydro or geothermal, it involves higher capital costs if the conditions are less suitable. We thus adjust the appropriate parameters in the calculation of the levelised cost of generating electricity. The depletion of renewable resources leads to higher production costs, which in the binary logit pair-wise comparison, becomes disfavoured over other types of systems, slowing down development. For example, when the good wind power sites have all been developed, investors are faced with using low wind/low capacity factor sites, which for the same wind turbine systems, results in high costs per unit electricity produced, and choose other renewable types instead. The database was developed by the authors using an extensive literature review as well as collected data.

### 3.6. Climate model GENIE

The climate-carbon cycle is simulated with GENIE in the configuration of [66,67], as applied in the Earth system model of intermediate complexity (EMIC) intercomparison project [68]. GENIE calculates atmospheric CO<sub>2</sub> concentrations and climate change from inputs of CO<sub>2</sub> emissions, land-use change and non-CO<sub>2</sub> climate forcing agents.

GENIE simulates approximately 250 years per CPU hour. This computational speed allows us to provide probabilistic projections, achieved through an 86-member ensemble of simulations for each emissions scenario, varying 28 key model parameters, in order to produce an estimate of the full uncertainty range stemming from uncertainty over these parameters [69]. The computational efficiency of GENIE is achieved mainly through the highly simplified model of the atmosphere, treated as a single layer with horizontal transport that is dominantly diffusive. Computational efficiency also benefits from low spatial resolution ( $\approx 10^\circ \times 5^\circ$  on average, with 16 depth levels in the ocean) and, relative to high-complexity Earth system models, simplifying assumptions in other model components. These include, for instance, the neglect of momentum transport in the ocean and the representation of all vegetation as a single plant functional type.

The components of GENIE are fully documented in the references that follow. The physical model [70] comprises the 3-D frictional geostrophic ocean model GOLDSTEIN coupled to a 2-D Energy Moisture Balance Atmosphere based on that of Fanning and Weaver [71] and Weaver et al. [72], and a thermodynamic–dynamic sea-ice model based on the work of Semtner [73] and Hibler [74]. Ocean biogeochemistry is modelled with BIOGEM [75], here with phosphate and iron limitation [76,77]

on marine productivity. BIOGEM is coupled to the sediment model SEDGEM [78], describing calcium carbonate preservation in deep-sea sediments and its role in regulating atmospheric CO<sub>2</sub>. Vegetation and soils are simulated with ENTSML [67], a dynamic model of terrestrial carbon and land use change (LUC), based on the Efficient Numerical Terrestrial Scheme [79]. ENTSML takes time-varying fields of LUC as inputs.

Each GENIE ensemble member continues from an associated simulation in an ensemble of transient historical simulations from AD 850 through to 2005, with forcing described in Ref. [80]. Emissions from 2005 are provided by E3ME. Present day CO<sub>2</sub> emissions from E3ME are understated by  $\sim 1.2$  GtC, the shortfall arising from neglected processes such as cement production and other small GHG sources. We add 1.2 GtC emissions to represent all of these missing sources and apply this adjustment every year scaled by total E3ME emissions.<sup>5</sup> We extrapolate these emissions trajectories until they reach zero post-2050 (see Fig. 5 panel i). Other climate forcing agents of non-CO<sub>2</sub> trace gases, sulphur emissions and land-use change are taken from an appropriate choice of Representative Concentration Pathway. For instance, RCP2.6 [81] is applied for non-CO<sub>2</sub> forcing in strong mitigation scenarios, while RCP8.5 [82] is assumed for a business-as-usual scenario. Different possible extrapolations are given in section 4.2.

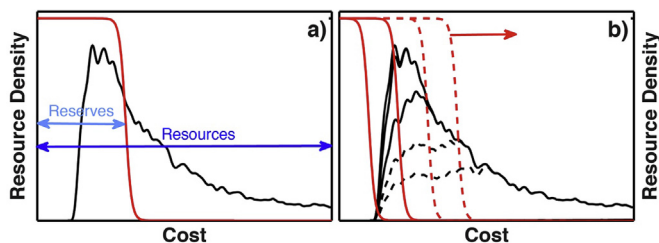
More detailed climate impacts (see Fig. 4) can be provided by applying the CO<sub>2</sub> concentrations output from GENIE to the climate model PLASIM-ENTS or its emulator [83]. We are currently upgrading our capabilities by developing a fully coupled carbon-cycle atmosphere-ocean global climate model, incorporating biogeochemistry into the intermediate complexity AOGCM PLASIM-GENIE [84]. The coupling of GENIE to E3ME-FTT is currently made with a soft coupling, from the economy to the climate. The link from climate to the economy through agriculture is under development. This is discussed in the SI. A limitation of this model stems from our current lack of modelling capacity for land-use/land-use change emissions, increasing uncertainty on the result. This will be addressed in an upcoming version of E3ME-FTT that will include land-use modelling, currently under development.

### 3.7. Policy instruments in E3ME-FTT-GENIE

The goal in the development of E3ME-FTT over time has been to design model representations of policy instruments that resemble real policies as closely as possible. The simulation nature of the model lends itself quite well to that task, as well as the heterogeneous agent base of FTT. Policies are of two possible broader types: those applied sector-wide or economy wide, in E3ME, and those applied to specific technologies or applications, in FTT. They are of four possible sub-types: economic incentives (taxes or subsidies), standards/regulations, public procurement and monetary instruments. These are listed in Table 1.

Although the level of resolution afforded by these sub-types is less detailed than what can be analysed through qualitative policy studies or in legal assessments, it is sufficient to capture a diversity of policy instruments as well as their interaction in a way that goes beyond IAMs currently used in climate policy and that is informative for policy-makers. Further refinement of the policy taxonomy is a current area of work in our efforts to improve the modelling approach.

In E3ME, policies are used to influence the behaviour of individuals and firms, as modelled by the econometric equations. For



**Fig. 3.** Schematic representation of the non-renewable resource depletion algorithm. a) Resource cost distribution at the start year (black), and extraction likelihood function (red), defining the quantity of reserves. b) With a stable demand, as reserves are gradually extracted and consumed, the reduced extraction rate forces the marginal cost to go up. Reproduced from Ref. [64].

<sup>5</sup> Scaling these emissions proportionally to total E3ME emissions can be interpreted as having a policy that aims to phase them out at the same rate as other fuel combustion emissions.

example, a carbon tax influences the amounts of carbon-intensive fuel used in various industries. Policies can also influence investment in particular sectors, and their carbon-intensity by, for example, phasing out the use of coal.

In FTT, economic incentive policies influence the behaviour of the choice model. They come in the form of taxes, subsidies or feed-in tariffs, that are used to influence the costs that agents attempt to minimise. For example, capital cost subsidies in power generation influence the levelised cost of generating electricity for a particular technology, which then raises its attractiveness in the discrete choice model that is part of the replicator equation.

Policies in FTT can also be of regulatory form, in which case they restrict what the choice spectrum is for of the investor or consumer. For example, if vehicles of the current petrol engine generation are phased out, they cannot be chosen by agents, and will undergo an exponential decline as a result at a rate that is function of their survival. Vehicles can furthermore be scrapped. New types of vehicles can also be introduced in the market, through a purchase program, either funded or enforced by the public authorities, to kick-start a new technology market (e.g. regulating taxi companies with respect to their vehicle efficiency). Finally, the content of liquid fuels can be changed by regulation through biofuel mandates.

### 3.8. Coupling of the models to one-another

Coupling between the macroeconomy and technology systems is crucial, and this is done dynamically simply by integrating the E3ME and FTT models into the same computer code. Many feedback mechanisms are allowed. For instance, in power generation, feedbacks include (1) electricity prices/demand, (2) investment, (3) fuel use, (4) government income and expenditure on taxes and subsidies. The models are solved together iteratively. This includes the fossil fuel depletion model and FTT models for power, road transport and household heating.<sup>6</sup> The coupling between the GENIE carbon cycle/climate is soft-linked to E3ME-FTT, in order to lower computational demands, as discussed in the SI.<sup>7</sup>

## 4. Discussion and policy implications

We apply the model here as an example by exploring the economic impacts of an elaborate bundle of policies aimed at generating a low-carbon transition that achieves the goals set by the Paris Agreement. In the next section, we list the details of the chosen policies, and following that, we explore the technological and economic implications.

### 4.1. Scenario for >70% chance 2 °C

We provide here an example of a basket of policies that enables, in the E3ME-FTT model, to achieve emissions reductions consistent with greater than 66% probability of not exceeding 2 °C of global warming. We note that bioenergy with carbon capture and storage (BECCS) is not a dominant feature of our scenarios, even if the consequence is higher system cost overall. We stress here that all of the policies included play a role in the broader emissions trajectory. We showed elsewhere [4] that policies interact and that the sum of their impacts can be greater than the sum of the impacts of policies applied individually. We do not claim, however, that this is the only

basket of policies that can achieve the goals of the Paris Agreement. We note that these policies are added to the baseline case, and that policies in the baseline scenario are mostly defined implicitly through the data that was used. This is the case since trajectories of diffusion of innovations, as observed in our historical data, take place partly due to existing policies (e.g. existing transport policies or incentives for households), on which we have no information, and thus are represented implicitly in the model.

#### Electricity sector (FTT:Power model)

- **Feed-in-Tariffs** - 100% of the difference between the levelised cost for renewables and the spot price, plus a 10–20% additional incentive to promote renewable uptake (wind and solar only).
- **Direct subsidies** – up to 60% of the investment cost. Phased out by 2050
- **Carbon price** in all regions increasing gradually to 500\$/tCO<sub>2</sub> in 2050 (2008 dollars)
- **Regulations** are used to phase out or cap coal in some regions
- **Kick-start** for bioenergy with Carbon Capture and Storage (USA, China, India).

#### Road transport sector (FTT:Transport)

- **Standards** – more efficient internal combustion engine technologies are introduced as standard in 2017.
- **Regulations** are used to phase out older less efficient combustion engines.
- **Taxes on registration based on rated emissions**, of 100\$/ (gCO<sub>2</sub>/km) for every gCO<sub>2</sub>/km more than the lowest emissions category
- **Taxes on fuel**, increasing up to 0.50\$/litre of fuel, in 2012 USD
- **Public procurement** – Electric vehicles introduced in the market in 2020 in all consumer categories
- **Biofuel blend mandate** that increases over time, starting at current levels, reaching 97% in 2050.

#### Household heating

- **Fuel tax** of 50€/tCO<sub>2</sub> in 2020, increasing to 200€/tCO<sub>2</sub> in 2050
- **Subsidies** of 25% of the capital cost for renewable heating systems
- **Kick-start** for low-carbon technologies with no presence in various regions

#### Other sectors

- **Regulations** – Coal phased out in China in non-power applications of heavy industry, replaced by electricity.
- **A biofuel blend** is assumed to increase by 10% per year in aviation
- **Regulations** – Household use of fossil fuels for heating regulated to decrease by 3% per year worldwide.

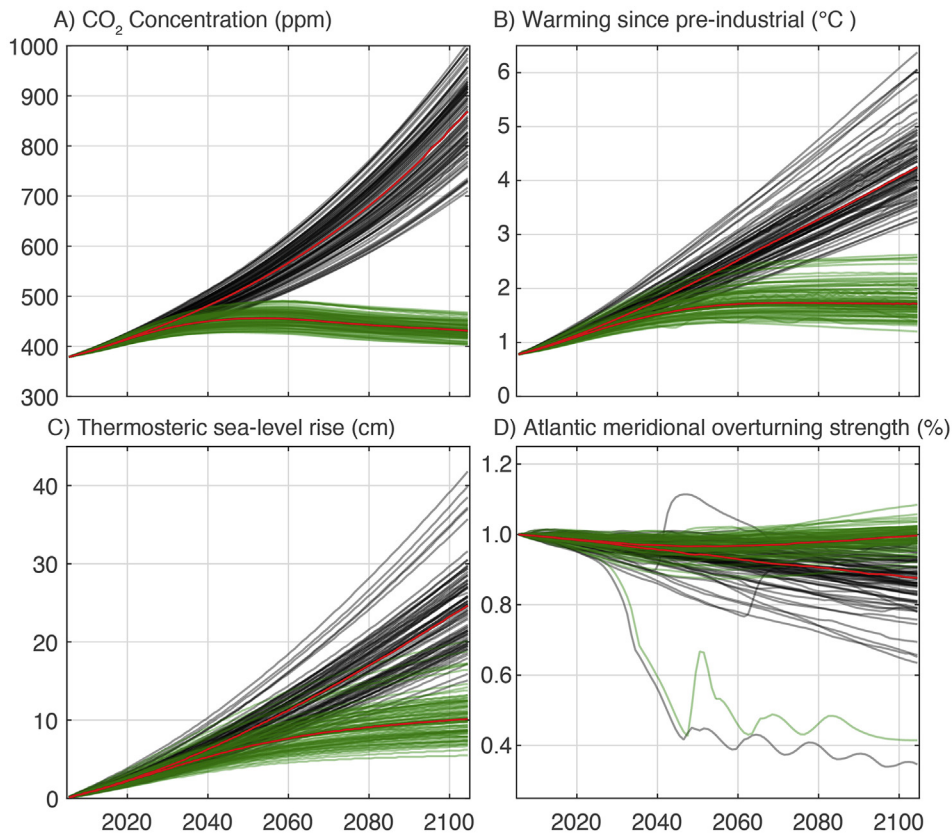
### 4.2. Technology diffusion for reaching 2 °C

Fig. 5 shows the diffusion of technology as a result of the policies listed above, in terms of capacity, in TW for the power sector and in vehicles for road transport. In the first column, the ‘current policies’ baseline is shown, with a development of the sectors that involves a slow diffusion of low-carbon technologies. In particular in the power sector, the current technology composition is mostly maintained, while for transport, higher efficiency vehicles (hybrids, natural gas) gradually replace lower ones.

<sup>6</sup> FTT models for industry (iron & steel, other metals, chemicals, etc) and for agriculture/land-use are under active development. FTT:Agriculture will establish the link between the climate and the economy.

<sup>7</sup> This will change as we attempt to study problems of deforestation, in which the economy directly influences the climate.





**Fig. 4.** Time evolution for the full 86-member GENIE ensemble of (A) atmospheric CO<sub>2</sub> concentration (ppm); (B) warming since preindustrial (°C); (C) global sea-level rise in cm (thermal expansion component); (D) peak Atlantic meridional overturning strength (% of initial). In black are the baseline ensembles, while green are the decarbonisation ensembles. Red lines show median trajectories.

The second column shows the impact, in power generation and transport, of policies given above. A faster diffusion of technologies is observed, including renewables in power generation and electric vehicles in transport. For transport, waves of ever higher efficiency vehicles arise one after the other before electric vehicles begin their mass diffusion. These changes lead to substantial changes in fuel use and emissions, since these sectors account together for over 60% of CO<sub>2</sub> emissions. These changes have economic impacts shown below. The third column shows energy service generation in that scenario (in GWh/y and Tpkm/y).

The combination of all sectoral contributions leads to substantial emissions reductions, sufficient to reach a probability greater than 70% of not exceeding 2 °C of global warming.<sup>8</sup> This is shown in the lower row of panels in Fig. 5, which gives global CO<sub>2</sub> emissions by fuel user. This emissions trajectory was used with the GENIE model to show the likelihood of meeting the target (see Fig. 4). We consider it consistent with the Paris Agreement.

Panel I of Fig. 5 shows how emissions were linearly extrapolated beyond 2050. This is reasonable because of the combination of negative emissions from BECCS and positive emissions lead to a linear trend. However, we assume that once emissions reach zero, the carbon price should decline substantially, and the business case for operating expensive negative emissions could become uncompetitive, and thus negative emissions stop soon after 2050. To test the reliability of this extrapolation, we provide other types of extrapolations: exponential decay to zero emissions, and exponential

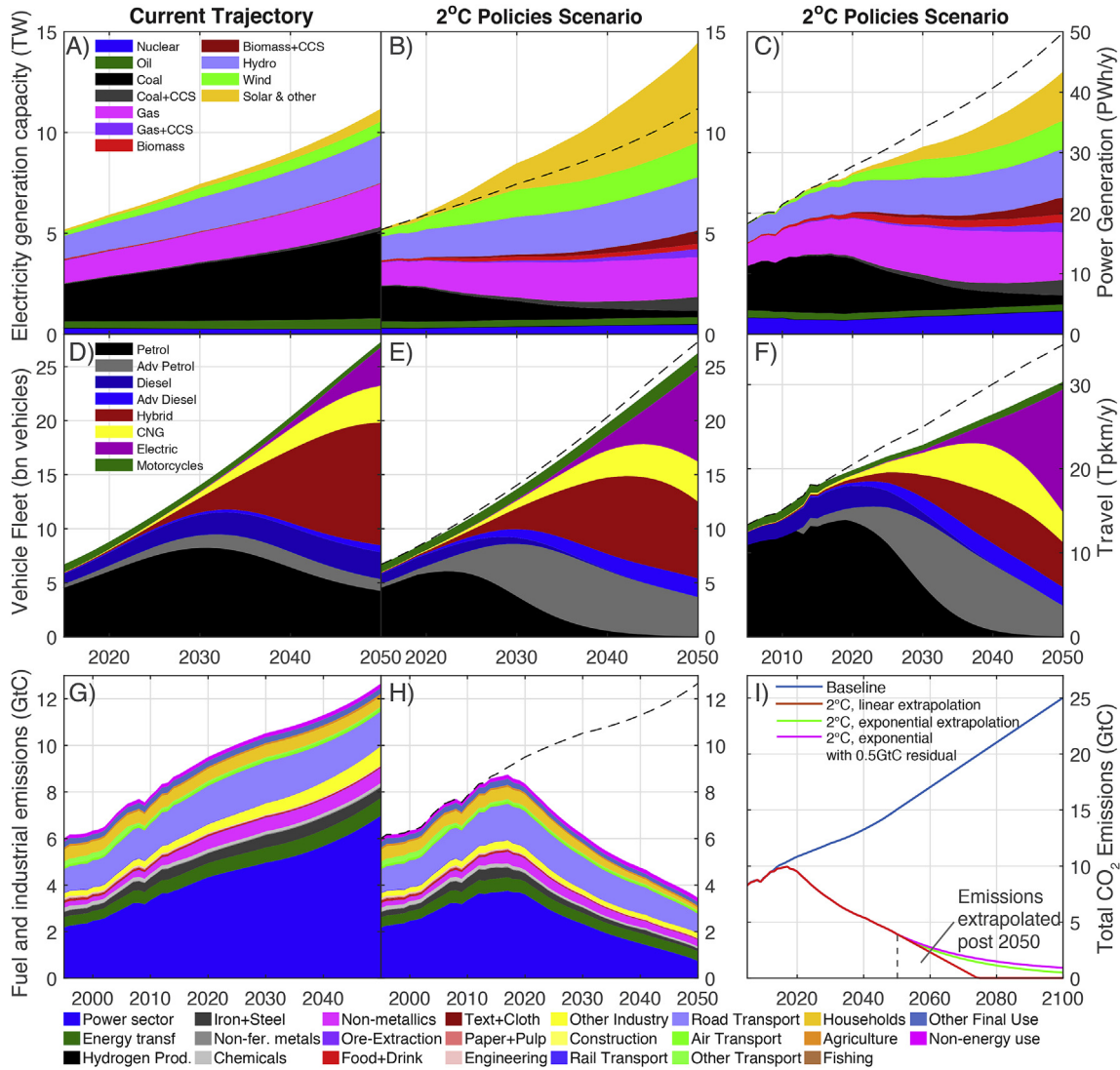
decay to residual emissions of 0.5 GtC, reflecting that some emissions sources could be challenging to remove. This reduces the probability of reaching the 2 °C from 75% (linear) to 70% (exponential) and 68% (0.5 GtC residual), all of which achieve the goal of the Paris Agreement. Thus, we do not expect that any other types of extrapolations lead to missing the target.

#### 4.3. The economics of a 2 °C scenario in a simulation model

Climate policy, leads to drastic changes in the use of fossil fuels. It also demands substantial investment into clean technology, and potentially large flows of money through public authorities to create the appropriate incentives for this investment to take place. This has important impacts to the economy, shown in Fig. 6.

Feedbacks to the economy operate in four ways. First, the costs of the transition are borne by consumers through higher energy service-related prices, and in particular, electricity prices. Higher production costs lead firms to increase their sale prices, which overall results in lower real disposable income for households. In general, this slows down regional economies. Secondly, investment in low-carbon technology, equipment and infrastructure, originating from increased total leverage (public and private debt) increases employment, thereby increasing household income. Thirdly, government spending typically stimulates regional economies, while carbon taxing or pricing increases regional prices overall. However, income from taxes is typically larger than expenditures in each region and is eventually spent, for example for reducing income taxes, which can increase household income and consumption. Fourthly, declines in fossil fuel use reduces exports and income in fossil fuel-

<sup>8</sup> 75% chance of not exceeding 2.0 °C, 80% chance of not exceeding 2.04 °C, with median 1.7 °C.



**Fig. 5.** Technology diffusion in FTT:Power and FTT:Transport for a 2 °C scenario in comparison to a current policies baseline, in terms of capacity (in GW). Panels A–C show power sector capacity by type of technology. Panels D–F show the technology composition of the vehicle fleet. G–H show total fuel and industrial emissions by sector. Panel I shows emissions trends extrapolated to 2100 for use in GENIE. Column A–D–G shows the FTT baseline scenario, column B–E–H shows the 2 °C scenario. Panels C and F show the 2 °C scenario in units of service generation (in 10<sup>15</sup> Watt-hours and 10<sup>12</sup> person-kilometres). Freight transport, included road transport as a fuel user, is not shown here. Power and transport classifications were aggregated for clarity.

**Table 1**  
Policy instruments in E3ME-FTT.

Policy type	Economy/sector-wide	Technology/process-specific
Economic incentives	Carbon price, carbon tax, income tax	Technology specific subsidies, taxes, feed-in tariffs (power, vehicles, heating)
Standards and regulations	Exogenous <sup>a</sup> phase-out and efficiency assumptions	Power sector: endogenous <sup>a</sup> phase-out Road vehicles: efficiency standards, phase out, biofuel mandates Household heating: efficiency standards, phase out, scrapping Vehicle standards, biofuel mandates
Public procurement	Public investment	Public procurement for power generators, vehicles, heating devices, to kick-start diffusion
Monetary	Base interest rates	Lower interest loan programs

<sup>a</sup> NOTE: The exogenous/endogenous phase-out terminology refers to whether the technology trajectory is specified or not. In FTT, the user decides on whether to impose a phase-out, and the model determines the trajectory.

producing regions, decreasing their income, while phasing out imports of fossil fuels for non-producer regions improves their trade balance, raising their income. The timing of these effects is, however, not simultaneous.

Panel (a) shows changes in investment in comparison to the current policies baseline scenario, in absolute constant Euros (ref year = 2000). Investment is higher in a low-carbon scenario in

countries where energy demand is growing, but not necessarily in regions where energy demand is stable (e.g. see data from Ref. [85]). In countries with growing energy demand, public spending is substantial (b), although more than covered by income from carbon taxing and pricing (c). The cost of the transition is partly covered by electricity consumers through higher electricity prices, that make up for higher costs of generation (d), which acts as

a drag to the economy. However, investment and building activity generates employment ( $e$ ), and the value of exports change, due to changes in competitiveness ( $f$ ). As a result, consumption is enhanced ( $g$ ), despite increases in the price index ( $h$ ), and GDP can be overall enhanced, depending on the balance of all factors ( $i$ ).

Meanwhile, in countries where energy demand is stable, changes are comparatively small. This excludes fossil fuel producers (e.g. USA), for which the loss due to declining fossil fuel exports is larger than the income generated by low-carbon investment.

Differences between countries observed in Fig. 6 can be explained as follows. Fast growing economies (e.g. China, India, Africa) receive intensified investment, as a fast growing trajectory of high carbon assets becomes re-directed into fast growing capital-intensive renewables, leading to employment, income and GDP increases. However, they suffer from increased energy prices. Meanwhile, fossil fuel exporters (e.g. USA, OPEC, Russia) suffer substantial stranded fossil fuel assets and declining investment. Fossil fuel importers (e.g. EU, China, India, Japan) benefit moderately from reduced fuel expenditures.

#### 4.4. Comparison to other energy models

The E3ME-FTT-GENIE IAM differs quite significantly from most existing IAMs, for reasons given in this section. For reference to other models, we cite the 27th Energy Modelling Forum (EMF27) [86], the 5th Assessment Report of the IPCC (Working Group III, [19]), and earlier FTT model studies [4,59]. Most differences to other models can ultimately be brought down to the simulation nature of E3ME-FTT, as most other models use system-wide cost/utility-optimisation algorithms (the social planner assumption).

In terms of technology diffusion and composition, in particular for renewables, EMF27 shows large variations across models, which are ascribed to a number of factors [86,87]: technology costs, technology availability, resource potentials, learning and power system integration. Costs and resource potentials are data source-dependent, and thus variations are to be expected. Some models have restrictions on availability of technology (e.g. solar PV on rooftops only) constraining the space of solutions. Only a subset of models include endogenous learning curves. Power system integration constraints are often included as fixed limits on technology shares (e.g. max 30% solar and wind), or included as additional integration costs.

Here, as a diffusion model, FTT functions quite differently. The diffusion pace is highly influenced by its own history, and therefore the diffusion process gains substantial momentum as it grows, a model property that we use to project current technological trajectories based on recent diffusion data. This explains the diffusion of hybrid and electric vehicles in the baseline scenario, without changes in policy, absent in other models, which is mostly driven by the fact that diffusion has been taking place in recent history, and the model only projects its continuation, assuming implicitly that current policies are maintained.<sup>9</sup> In addition, FTT features learning curves and fully endogenous power system stability constraints. Power system integration constraints, described elsewhere [59], change according to the system's composition. This ties, for instance, the diffusion of renewables with that of flexible systems in a sort of mutualism.

FTT results presented here differ from earlier reported results from the same model [4,59]. Several improvements to the model have been made since these were published: higher regional

resolution, higher policy resolution and improved cost and natural resources data. In particular, care was taken in recent scenarios to constrain the growth of the use of bioenergy and hydroelectricity to maintain these within more realistic bounds given existing debates [88], using regulatory policy. Furthermore, a much lower reliance on the carbon price is used, in line with existing proposed policy packages (notably in the EU). Data on costs were updated from 2008 to 2014, during which period solar PV and wind have seen spectacular progress and cost reductions, changing model outcomes substantially. We note that our model could not fully foresee this with 2008 data, underlying the inherent challenges of projecting technology markets. Model regional resolution also increased threefold.

#### 4.5. Sources of variations in macroeconomic impacts of climate policies

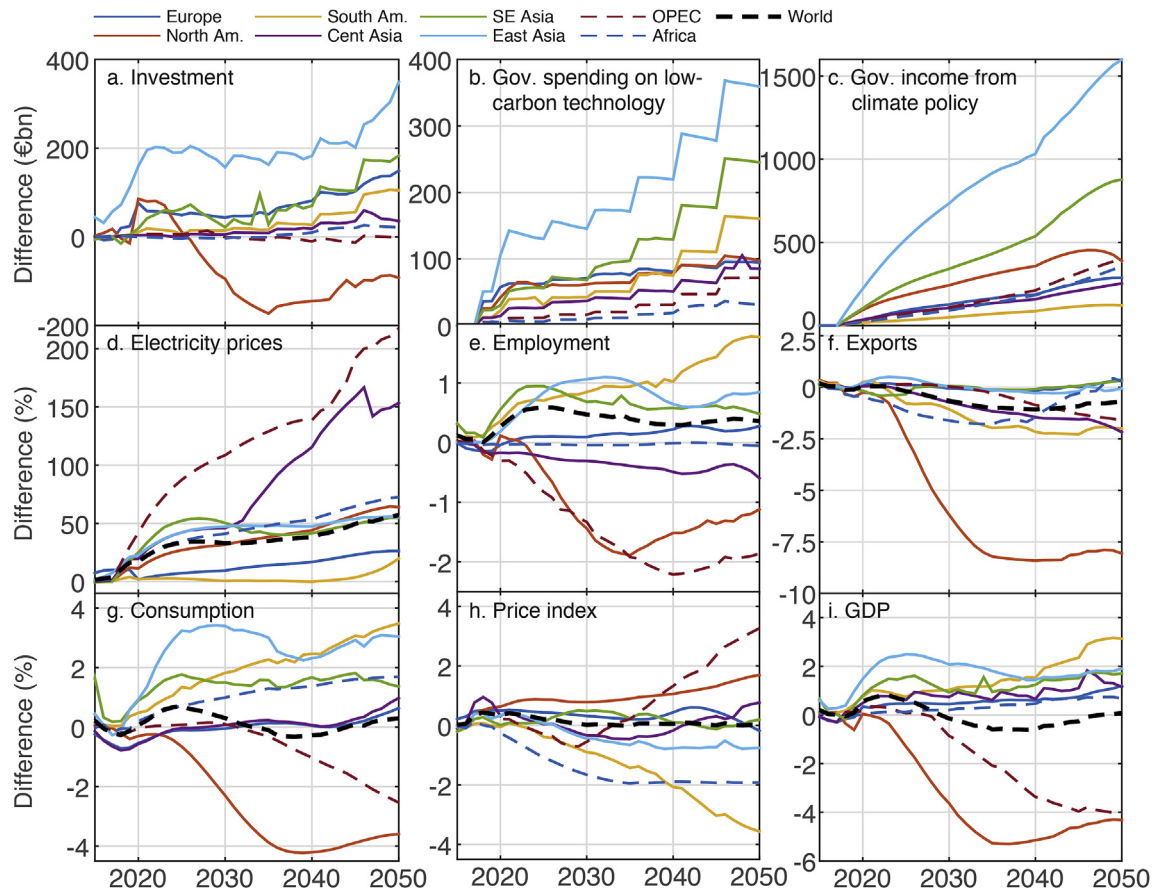
The differences in economic results from EMF27 and IPCC AR5 are more important than for technology systems, since they are often in contradiction. In general equilibrium models, investment is constrained by the amount of finance available, itself tied to the saving propensity parameters assumed in models, resulting in a fixed share of GDP available for investment. This equilibrium property implies that when higher than baseline investment is required for decarbonisation, the same amount of investment is cancelled elsewhere in the economy (crowding-out), which by construction, always leads to GDP losses [17]. It implies, in some sense, that GDP can only be highest in the high carbon baseline, and economic impacts are thus expressed strictly as 'mitigation costs', excluding the possibility of negative costs [19,86]. Meanwhile, in partial equilibrium models, system costs are obtained using the area under marginal abatement cost curves, themselves assuming that mitigation has positive costs. In all models, reported costs are roughly equal to the amount of investment required.

In E3ME-FTT, the baseline scenario is not special in any particular way, except in the sense that no additional policies are implemented, in comparison to today's world. It is not a scenario with necessarily lower energy system costs or higher GDP, or even lower investment. Economic impacts in E3ME relate mostly to financial and trade effects: changes in energy or other prices, employment, investment and in the trade balance. For instance, finance costs for investment in renewables are passed on to consumers through electricity prices. Investment, however, generates employment. As opposed to general equilibrium models, E3ME does not assume money neutrality, but instead, models money creation by banks. Therefore, investment in one sector does not cancel out investment elsewhere, but instead, leads to higher leverage (total private debt). Higher than baseline investment generally leads to increases in price levels across sectors, in response to requirements to service debts incurred. Higher rates of inflation lead to lower real incomes and spending (depending on wage reactions) which leads to lower GDP but the change does not usually offset the positive effects of the investment stimulus. Including a financial sector to general equilibrium models could provide similar properties (although not all), as has been done with GEM-E3-FIT [17].

The pace of transformation, as opposed to its overall ambition, determines the magnitude of most economic impacts of climate policy in E3ME, in contrast to other models<sup>10</sup> One of the key

<sup>9</sup> Note that inertia in FTT is not only related to vintage effects (or turnover), but also, to assuming that technology availability and visibility increases with the state of diffusion.

<sup>10</sup> In standard equilibrium models, negative GDP impacts arise proportionally to total cumulated investment in low-carbon technology, while in E3ME-FTT, macroeconomic impacts arise with the pace of technological change, and the rate at which the economy can absorb these changes.



**Fig. 6.** Economics of a low-carbon transition, viewed under a number of economic indicators, aggregated from 59 to 8 regions for clarity. In each panel, a difference to the baseline scenario is taken, and expressed in monetary values (panels a–c) or in percentage change (panels d–i).

detrimental impacts of climate policy is through stranded fossil fuel assets, in which fossil-related sectors shut down output, and substantial employment is lost. Thus, while importer countries see trade balance benefits, exporters suffer substantial GDP losses when the demand for fossil fuels declines. As finance is not a fixed share of GDP in E3ME, a lack of demand for investment in energy exporters is not compensated by shifts in prices and higher demand elsewhere, so there can be a large fall in overall production levels.

#### 4.6. Deconstructing a basket of policies for 2 °C

Since E3ME-FTT features a broad palette of possible policies for reducing emissions (section 4.1), substantial uncertainty can be associated with the particular composition of any policy basket. In order to estimate this uncertainty, it is necessary to run the model under many alternate baskets with small variations. Note that many baskets can reach the same emissions target, and that the full policy space has not yet been fully explored.

Here, we have produced a set of over 50 simulations to do this, shown in the SI. We show how global warming changes (expressed using 75% probability), when removing groups of policies in groups of countries from the 2 °C basket. We find that carbon pricing is the most important policy instrument, but that no country pulling out of climate policy on its own can increase warming to more than 2.7 °C. This, however, represents only the case for one policy/region, and since the model is non-linear, removing more is not linearly related to this. This is due to the fact that countries and policies

interact, as shown in earlier work [4]. Note also that while the carbon tax appears to incentivise most of the decarbonisation, when assessed in terms of peak warming, this is a reflection of the dominance of the power sector for emissions; however, technology compositions in other sectors would not change substantially without other policies.

#### 4.7. Sensitivity analyses: technology uncertainty

E3ME-FTT is a relatively stable model, by which we mean that it is robust against changes of input data. The model does not generate step changes or flips. Instabilities can be the result of faulty regressions, which we identify and remove. Being a path-dependent dynamical model, E3ME-FTT displays strong time autocorrelation, which means that every time step is naturally strongly related to its preceding time step.

The model features intrinsic output uncertainty through uncertainty over its parameter values. Since it is a dynamical model, uncertainty accumulates over simulation time span, which means that long-term outcomes can change substantially for small changes in input parameters (see e.g. Ref. [33]). However, this doesn't mean that the model is unstable over changes of parameters. In FTI, for large changes in technology uptake rates to take place (uptake is always continuous and changes smoothly), changes in mean perceived costs must substantially exceed the width of its associated distribution (see Fig. 2). If not, changes are imperceptible. In the SI, we provide a sensitivity analysis over eight

parameters of FTT:Power and FTT:Transport, by amounts that roughly correspond to the widths of the cost distributions. These parameters are those, other than policy, that generate the largest changes in emissions.<sup>11</sup> We find that for cost changes of 20%, technology shares change, by 2050, by at most 20%. We furthermore show the propagation of these variations into E3ME, expressing related changes to GDP and employment. The propagation of errors from E3ME-FTT to GENIE can be estimated as the spread of possible outcomes in E3ME convoluted with the spread of outcomes of GENIE shown in Fig. 4.

#### 4.8. Summary for policy-making

We summarise here what has been learned for better informing policy-making. The model presented here is a descriptive model, as opposed to more common normative ones. Its usefulness lies in the detail of technology diffusion modelling combined with non-equilibrium economic modelling. For policy-making, what is key is the high policy space that this model offers.

We observe, for instance, that in such a model structure, most policies cannot be expressed in terms of a carbon price-equivalent, because policies interact with one another. For example, using a public procurement policy in transport, to kick-start the EV market, enables taxes and subsidies to have a stronger effectiveness. Another example is where regulatory policy on what power generation technologies can be built, changes the effectiveness of the carbon price.

The large policy space of this model, and interactions between policies, imply that identifying optimal strategies is not possible, as too many policy frameworks can lead to the same outcome. For example, one could take a more regulatory approach, or one could take a more market-based approach, and reach similar outcomes for emissions reductions. This is why this model is particularly suitable for impact assessment of detailed policy packages, but less so for agenda setting. We have shown here how a particular policy package in the model can achieve emissions reductions consistent with the Paris Agreement. However, other policy frameworks could also be identified that reach similar outcomes.

### 5. Conclusion: blueprint for a new role for integrated assessment models post-Paris

Designing a policy strategy to implement the Paris Agreement is a complex process that will involve trial and error. Time, however, is limited, and policy-makers must use all available information to ensure success. The policy cycle requires a detailed assessment of every component of a broader policy strategy in order to gain sufficient public and political support for it to be turned into law.

We presented here an integrated assessment modelling approach which is in many ways a first of a kind. It involves an integrated model simulation of the economy, technology and climate system with the highest available definition of policy instruments. It can be used to analyse in detail the likely impacts of complex baskets of low-carbon policies, and determine their ability to achieve policy objectives such as climate targets.

We stress that while modelling the future features inherent uncertainty, it is nevertheless the only method available to quantitatively inform policy-making. While the meaning of results can only be understood in the context of their respective uncertainty, we believe that the use of simplified models with the aim of

generating simpler storylines is insufficient and could be misleading, while instead, the use of complex methods can improve our understanding of reality. Similarly, policy-making cannot be reduced to simple pricing-only strategies. The details of policy instruments matter, and their analysis is context-dependent, a reality that must increasingly be taken into account in models. We argue that this model can be used as a blueprint for the design of better models that could be used to analyse the impacts of low-carbon policies around the world.

#### Acknowledgements

All authors acknowledge C-EERNG and Cambridge Econometrics for general academic and technical support. JFM, HP, PS, JV, NRE and PH acknowledge funding from the UK's research councils: JFM acknowledges funding from the Engineering and Physical Sciences Research Council (EPSRC), fellowship no. EP/K007254/1; JFM, PS and JV acknowledge funding from two Newton Fund grants, no EP/N002504/1 (EPSRC) and ES/N013174/1 (Economic and Social Research Council, ESRC). NRE and PH acknowledge funding from the Natural Environment Research Council (NERC) grant no NE/P015093/1. Additionally, PS acknowledges funding from Conicyt. JFM and HP acknowledge funding from The European Commission's Horizon 2020 Sim4Nexus grant, and from DG ENERGY, and AL acknowledges a postdoctoral fellowship from the University of Macau. JFM acknowledges H. de Coninck and M. Grubb for informative discussions.

#### Appendix A. Supplementary data

Supplementary data related to this article can be found at <https://doi.org/10.1016/j.esr.2018.03.003>.

#### References

- [1] Paris Agreement, 22 April 2016, art 2(1)(a). 2015.
- [2] G. Probst, A. Bassi, *Tackling Complexity: a Systemic Approach for Decision Makers*, Greenleaf publishing, 2014.
- [3] European Commission, *Better Regulation Guidelines*, in European Commission Report, 2015.
- [4] J.-F. Mercure, et al., *The dynamics of technology diffusion and the impacts of climate policy instruments in the decarbonisation of the global electricity sector*, *Energy Pol.* 73 (2014) 686–700.
- [5] F. Knobloch, J.-F. Mercure, *The behavioural aspect of green technology investments: a general positive model in the context of heterogeneous agents*, *Environ. Innovat. Societal Trans.* 21 (2016) 39–55.
- [6] A. Lam, *Modelling the Impact of Policy Incentives on Global CO2 Emissions from Passenger Cars and Motorcycles with a Dynamic Model of Technological Change*, PhD Thesis, University of Cambridge, 2017.
- [7] J.-F. Mercure, A. Lam, *The effectiveness of policy on consumer choices for private road passenger transport emissions reductions in six major economies*, *Environ. Res. Lett.* 10 (6) (2015) 064008.
- [8] J.-F. Mercure, et al., *Modelling complex systems of heterogeneous agents to better design sustainability transitions policy*, *Global Environ. Change* 37 (2016) 102–115.
- [9] D.L. McCollum, et al., *Improving the behavioral realism of global integrated assessment models: an application to consumers' vehicle choices*, *Transport. Res. Transport Environ.* 55 (2016) 322–342.
- [10] H. Pettifor, et al., *Social influence in the global diffusion of alternative fuel vehicles—A meta-analysis*, *J. Transport Geogr.* 62 (2017) 247–261.
- [11] H. Pettifor, et al., *Modelling social influence and cultural variation in global low-carbon vehicle transitions*, *Global Environ. Change* 47 (2017) 76–87.
- [12] C. Wilson, H. Pettifor, D. McCollum, *Improving the Behavioural Realism of Integrated Assessment Models of Global Climate Change Mitigation: a Research Agenda*, ADVANCE Project Deliverable No. 3.2, 2015.
- [13] O. Edenhofer, et al., *The economics of low stabilization: model comparison of mitigation strategies and costs*, *Energy J.* (2010) 11–48.
- [14] IPCC, *Mitigation of Climate Change. Contribution of Working Group III to the Fifth Assessment Report of the Intergovernmental Panel on Climate Change*, Cambridge University Press, Cambridge, UK and New York, NY, 2014.
- [15] N.H. Stern, *The Economics of Climate Change: the Stern Review*, Cambridge University press, 2007.
- [16] European Commission, *The macroeconomic and other benefits of energy efficiency*, in: *Final Report by Cambridge Econometrics, ECN, EY, SQ Consult and Wuppertal Institut*, 2017.

<sup>11</sup> Other parameters that could drive uncertainty, in the case of climate policy analysis, are energy price elasticities and technological progress indicators. These do not influence the technology composition, and thus influence emissions less, and are not analysed here.

- [17] J. Mercure, et al., Policy-induced energy technological innovation and finance for lowcarbon economic growth. Study on the macroeconomics of energy and climate policies, European Commission Report, 2016.
- [18] H. Pollitt, J.-F. Mercure, The role of money and the financial sector in energy-economy models used for assessing climate and energy policy, *Clim. Pol.* (2017) 1–14.
- [19] L. Clarke, et al., Chapter 6: assessing transformation pathways, in: *Climate Change 2017, Working Group III, Fifth Assessment Report of the Intergovernmental Panel on Climate Change*, 2014.
- [20] M. Mazzucato, The entrepreneurial state, *Soundings* 49 (49) (2011) 131–142.
- [21] H. Hottenrott, S. Rexhäuser, Policy-induced environmental technology and inventive efforts: is there a crowding out? *Ind. Innovat.* 22 (5) (2015) 375–401.
- [22] D. Popp, R. Newell, Where does energy R&D come from? Examining crowding out from energy R&D, *Energy Econ.* 34 (4) (2012) 980–991.
- [23] J. Leaton, L. Sussams, Unburnable Carbon: Are the World's Financial Markets Carrying a Carbon Bubble? Carbon Tracker Initiative, 2011.
- [24] L. Sussams, J. Leaton, Expect the Unexpected: the Disruptive Power of Low-carbon Technology, Grantham Institute at Imperial College London, London, UK, 2017.
- [25] S. Battiston, et al., A climate stress-test of the financial system, *Nat. Clim. Change* 7 (4) (2017) 283–288.
- [26] M. Carney, Breaking the tragedy of the horizon—climate change and financial stability, Speech given at Lloyd's of London, September, 2015.
- [27] Bank of England, The impact of climate change on the UK insurance sector, Report by the Prudential Regulation Authority, 2015.
- [28] J.M. Keynes, *A Treatise on Probability*, Courier Corporation, 1921.
- [29] R. Skidelsky, *Keynes: the Return of the Master* (Paperback ed.), Public Affairs, New York, 2010.
- [30] S. Keen, *Debunking Economics: the Naked Emperor Dethroned?* Zed Books Ltd, 2011.
- [31] T. Morgandi, J. Vinuales, Legal aspects of energy policy, in: M. Pollitt, et al. (Eds.), *In Search of Good Energy Policy*, To appear at Cambridge University Press, 2018.
- [32] M. Grubb, J.-C. Hourcade, K. Neuhoﬀ, *Planetary Economics*, Routledge Abingdon, 2014.
- [33] W.B. Arthur, Competing technologies, increasing returns, and lock-in by historical events, *Econ. J.* 99 (394) (1989) 116–131.
- [34] W.B. Arthur, D.A. Lane, Information contagion, *Struct. Change Econ. Dynam.* 4 (1) (1993) 81–104.
- [35] E.M. Rogers, *Diffusion of Innovations*, Simon and Schuster, 2010.
- [36] European Commission, *IMPACT ASSESSMENT, a Policy Framework for Climate and Energy in the Period from 2020 up to 2030* [COM(2014) 15 Final] [SWD(2014) 16 Final], in European Commission Report, 2014.
- [37] T. Barker, et al., GDP and employment effects of policies to close the 2020 emissions gap, *Clim. Pol.* 16 (4) (2016) 393–414.
- [38] T. Kober, et al., Macroeconomic impacts of climate change mitigation in Latin America: a cross-model comparison, *Energy Econ.* 56 (2016) 625–636.
- [39] H. Pollitt, et al., Macroeconomic analysis of the employment impacts of future EU climate policies, *Clim. Pol.* 15 (5) (2015) 604–625.
- [40] H. Pollitt, et al., An economic and environmental assessment of future electricity generation mixes in Japan—an assessment using the E3MG macro-econometric model, *Energy Pol.* 67 (2014) 243–254.
- [41] European Commission, *IMPACT ASSESSMENT, Proposal for a Directive of the European Parliament and of the Council Amending Directive 2012/27/EU on Energy Efficiency* [COM(2016) 761 Final] [SWD(2016) 406 Final]. European Commission Report, 2016.
- [42] IRENA, *Perspectives for the Energy Transition: Investment Needs for a Low-Carbon Energy System*. IRENA report, 2017.
- [43] Cambridge Econometrics, *The E3ME Model*, 2017.
- [44] R.F. Engle, C.W. Granger, Co-integration and error correction: representation, estimation, and testing, *Econometrica J. Econom. Soc.* (1987) 251–276.
- [45] D.F. Hendry, A.R. Pagan, J.D. Sargan, Dynamic specification, in: *Handbook of Econometrics*, vol. 2, 1984, pp. 1023–1100.
- [46] M. Lavoie, *Post-keynesian Economics: New Foundations*, Edward Elgar Publishing, 2014.
- [47] R.E. Lucas, Econometric policy evaluation: a critique, in: *Carnegie-Rochester Conference Series on Public Policy*, Elsevier, 1976.
- [48] A.P. Kirman, Whom or what does the representative individual represent? *J. Econ. Perspect.* 6 (2) (1992) 117–136.
- [49] M. McLeay, A. Radia, R. Thomas, *Money in the Modern Economy: an Introduction*, 2014.
- [50] M. McLeay, A. Radia, R. Thomas, *Money Creation in the Modern Economy*, 2014.
- [51] J.M. Keynes, *General Theory of Employment, Interest and Money*, Palgrave-Macmillan, 1936.
- [52] P. Ekins, et al., The implications for households of environmental tax reform (ETR) in Europe, *Ecol. Econ.* 70 (12) (2011) 2472–2485.
- [53] P. Ekins, et al., Increasing carbon and material productivity through environmental tax reform, *Energy Pol.* 42 (2012) 365–376.
- [54] P. Seung-Joon, et al., The Double Dividend of an Environmental Tax Reform in East Asian Economies. Low-carbon, Sustainable Future in East Asia, *Improving Energy Systems, Taxation and Policy Cooperation*, 2015.
- [55] J.-F. Mercure, *Fashion, Fads and the Popularity of Choices: Micro-foundations for Non-equilibrium Consumer Theory*, 2017 arXiv:1607.04155.
- [56] A. Grübler, N. Nakićenović, D.G. Victor, Dynamics of energy technologies and global change, *Energy Pol.* 27 (5) (1999) 247–280.
- [57] J.-F. Mercure, et al., *Integrated Assessment Modelling as a Positive Science: Modelling Policy Impacts in Road Transport to Meet a Climate Target Well below 2C*, 2017 arXiv:1702.04133.
- [58] J. Hofbauer, K. Sigmund, *Evolutionary Games and Population Dynamics*, Cambridge university press, 1998.
- [59] J.-F. Mercure, FTT: power: A global model of the power sector with induced technological change and natural resource depletion, *Energy Pol.* 48 (2012) 799–811.
- [60] J.-F. Mercure, An age structured demographic theory of technological change, *J. Evol. Econ.* 25 (4) (2015) 787–820.
- [61] M.E. Ben-Akiva, S.R. Lerman, *Discrete Choice Analysis: Theory and Application to Travel Demand*, vol. 9, MIT press, 1985.
- [62] T.A. Domencich, D. McFadden, *Urban Travel Demand—a Behavioral Analysis*, 1975.
- [63] F.W. Geels, Technological transitions as evolutionary reconfiguration processes: a multi-level perspective and a case-study, *Res. Pol.* 31 (8) (2002) 1257–1274.
- [64] J.-F. Mercure, P. Salas, On the global economic potentials and marginal costs of non-renewable resources and the price of energy commodities, *Energy Pol.* 63 (2013) 469–483.
- [65] J.-F. Mercure, P. Salas, An assessment of global energy resource economic potentials, *Energy* 46 (1) (2012) 322–336.
- [66] P. Holden, et al., Controls on the spatial distribution of oceanic  $\delta^{13}C$  DIC, *Biogeosciences* 10 (3) (2013) 1815–1833.
- [67] P.B. Holden, et al., A model-based constraint on CO<sub>2</sub> fertilisation, *Biogeosciences* 10 (1) (2013) 339–355.
- [68] K. Zickfeld, et al., Long-term climate change commitment and reversibility: an EMIC intercomparison, *J. Clim.* 26 (16) (2013) 5782–5809.
- [69] A. Foley, et al., Climate model emulation in an integrated assessment framework: a case study for mitigation policies in the electricity sector, *Earth Syst. Dynam.* 7 (1) (2016) 119.
- [70] N.R. Edwards, R. Marsh, Uncertainties due to transport-parameter sensitivity in an efficient 3-D ocean-climate model, *Clim. Dynam.* 24 (4) (2005) 415–433.
- [71] A.F. Fanning, A.J. Weaver, An atmospheric energy-moisture balance model: climatological, interpentadal climate change, and coupling to an ocean general circulation model, *J. Geophys. Res. Atmosphere* 101 (D10) (1996) 15111–15128.
- [72] A.J. Weaver, et al., The UVic Earth System Climate Model: model description, climatology, and applications to past, present and future climates, *Atmos.-Ocean* 39 (4) (2001) 361–428.
- [73] A.J. Semtner Jr., A model for the thermodynamic growth of sea ice in numerical investigations of climate, *J. Phys. Oceanogr.* 6 (3) (1976) 379–389.
- [74] W. Hibler III, A dynamic thermodynamic sea ice model, *J. Phys. Oceanogr.* 9 (4) (1979) 815–846.
- [75] A. Ridgwell, et al., Marine geochemical data assimilation in an efficient Earth System Model of global biogeochemical cycling, *Biogeosciences* 4 (1) (2007) 87–104.
- [76] J. Annan, J. Hargreaves, Efficient identification of ocean thermodynamics in a physical/biogeochemical ocean model with an iterative Importance Sampling method, *Ocean Model.* 32 (3) (2010) 205–215.
- [77] S.C. Doney, et al., Natural variability in a stable, 1000-yr global coupled climate-carbon cycle simulation, *J. Clim.* 19 (13) (2006) 3033–3054.
- [78] A. Ridgwell, J. Hargreaves, Regulation of atmospheric CO<sub>2</sub> by deep-sea sediments in an Earth system model, *Global Biogeochem. Cycles* 21 (2) (2007).
- [79] M. Williamson, et al., An efficient numerical terrestrial scheme (ENTS) for Earth system modelling, *Ecol. Model.* 198 (3) (2006) 362–374.
- [80] M. Eby, et al., Historical and idealized climate model experiments: an inter-comparison of Earth system models of intermediate complexity, *Clim. Past* 9 (3) (2013) 1111–1140.
- [81] D.P. Vuuren, et al., RCP2. 6: exploring the possibility to keep global mean temperature increase below 2 C, *Climatic Change* 109 (1–2) (2011) 95–116.
- [82] K. Riahi, et al., RCP 8.5—a scenario of comparatively high greenhouse gas emissions, *Climatic Change* 109 (1–2) (2011) 33.
- [83] P. Holden, et al., PLASIM-ENTSem v1.0: a spatio-temporal emulator of future climate change for impacts assessment, *Geosci. Model Dev. (GMD)* 7 (1) (2014) 433–451.
- [84] P.B. Holden, et al., PLASIM-GENIE v1.0: a new intermediate complexity AOGCM, *Geosci. Model Dev. (GMD)* 9 (2016) 3347–3361.
- [85] IEA, *World Energy Outlook*, OECD/IEA, 2016.
- [86] E. Kriegler, et al., The role of technology for achieving climate policy objectives: overview of the EMF 27 study on global technology and climate policy strategies, *Climatic Change* 123 (3–4) (2014) 353–367.
- [87] G. Luderer, et al., The role of renewable energy in climate stabilization: results from the EMF27 scenarios, *Climatic Change* 123 (3–4) (2014) 427–441.
- [88] S. Fuss, et al., Betting on negative emissions, *Nat. Clim. Change* 4 (10) (2014) 850–853.